



Government of India  
Ministry of Earth Sciences  
India Meteorological Department



Press Release

Date: 26<sup>th</sup> June, 2025

Time of Issue: 1430 hours IST

**Subject: Extremely heavy rainfall likely to continue over Kerala and South Interior Karnataka on 26<sup>th</sup> June, 2025 and Heavy to very heavy rainfall activity likely to continue over many parts of Northwest, central, east & northeast India during next 7 days.**

**Southwest Monsoon (Annexure I):**

- ❖ Southwest monsoon has further advanced over some more parts of Rajasthan, Haryana and Punjab.
- ❖ The Northern Limit of Monsoon passes through 27.0°N/68.5°E, 27.0°N/70.0°E, Jaisalmer, Bikaner, Jhunjhunu, Bharatpur, Rampur, Sonipat, Anup Nagar and 29.0°N/70.0°E.
- ❖ Conditions are favourable for further advance of Southwest monsoon over remaining parts of the country during next 3- 4 days.

**Realised weather during past 24 hours till 0830 hours IST of today, the 26<sup>th</sup> June, 2025 (Annexure II):**

- ❖ **Heavy to very heavy rainfall with extremely heavy falls** recorded at isolated places over Kerala.
- ❖ **Heavy to very heavy rainfall** recorded at isolated places over Tamil Nadu, Coastal Karnataka, South Interior Karnataka, Gujarat Region, Odisha, Jammu, West Madhya Pradesh, Vidarbha; **Heavy rainfall** at isolated places over Himachal Pradesh, Uttarakhand, Punjab, Haryana, Rajasthan, Madhya Maharashtra, Marathwada, East Madhya Pradesh, Chhattisgarh, Assam, North Interior Karnataka and Jharkhand.
- ❖ **Thunderstorm accompanied with Squally/Gusty winds with speed 40-60 kmph** at isolated places over Himachal Pradesh, Gangetic West Bengal, Jharkhand, Uttarakhand, East Uttar Pradesh, Madhya Maharashtra, West Madhya Pradesh, Bihar, Andaman & Nicobar Islands, Punjab, Haryana, Tamil Nadu, Kerala, Rayalaseema, Telangana and Marathwada.

For more details of realised weather, kindly refer [Annexure I](#),

**i. Weather Systems, Forecast and Warnings (refer to Annexure III & IV):**

- ❖ Under the influence of an upper air cyclonic circulation, a low-pressure area has formed over Northwest Bay of Bengal and adjoining coastal areas of Odisha and West Bengal at 0830 hours IST of today, the 26<sup>th</sup> June 2025. It is likely to move west-northwestwards across north Odisha and adjoining Gangetic West Bengal, Jharkhand and Chhattisgarh.
- ❖ A trough runs from northeast Arabian Sea to low pressure area over northwest Bay of Bengal and adjoining coastal areas of Odisha and West Bengal across south Gujarat, Madhya Pradesh, Chhattisgarh in lower & middle tropospheric levels.
- ❖ A cyclonic circulation lies over northeast Madhya Pradesh in lower tropospheric levels.
- ❖ Under the influence of these systems, the following weather is likely:

**West India:**

- ✓ **Heavy to very heavy rainfall** at isolated places likely over Konkan & Goa, Ghat areas of Madhya Maharashtra, Gujarat state during next 7 days and **isolated heavy rainfall** over Marathwada on 26<sup>th</sup> June.
- ✓ Light/moderate rainfall at most/many places likely over the region during next 7 days.

**Northwest India:**

- ✓ **Isolated heavy rainfall** likely over Punjab, Haryana, Himachal Pradesh, Uttarakhand, East Rajasthan during 26<sup>th</sup> June-02<sup>nd</sup> July; West Rajasthan, Jammu-Kashmir during 26<sup>th</sup>-29<sup>th</sup>; Uttar Pradesh during 28<sup>th</sup> June-02<sup>nd</sup> July with **very heavy rainfall** over Jammu & Kashmir on 26<sup>th</sup>; Himachal Pradesh, Haryana on 29<sup>th</sup>; East Rajasthan during 26<sup>th</sup>-

28<sup>th</sup>; Uttarakhand during 26<sup>th</sup>-30<sup>th</sup>, East Rajasthan during 26<sup>th</sup>-28<sup>th</sup>; Punjab on 26<sup>th</sup> & 29<sup>th</sup>; Uttar Pradesh during 29<sup>th</sup> June-02<sup>nd</sup> July.

- ✓ Light/moderate rainfall at most/many places accompanied with **thunderstorm, lightning & gusty winds speed reaching 30-40 kmph** likely over Northwest India during 26<sup>th</sup> June-02<sup>nd</sup> July.

#### East & Central India:

- ✓ Isolated **heavy rainfall** over Madhya Pradesh, Chhattisgarh, Odisha, Jharkhand during 26<sup>th</sup> June-02<sup>nd</sup> July; Gangetic West Bengal during 26<sup>th</sup>-30<sup>th</sup>, Vidarbha on 26<sup>th</sup> & 27<sup>th</sup>; Sub-Himalayan West Bengal & Sikkim, Bihar during 27<sup>th</sup>-30<sup>th</sup> June with **very heavy rainfall** over West Madhya Pradesh on 26<sup>th</sup>, 27<sup>th</sup> June, 01<sup>st</sup> & 02<sup>nd</sup> July; East Madhya Pradesh on 26<sup>th</sup>, 30<sup>th</sup> June & 01<sup>st</sup> July; Vidarbha and Odisha on 26<sup>th</sup>; Jharkhand on 26<sup>th</sup> & 29<sup>th</sup> June.
- ✓ Light/moderate rainfall at most/many places accompanied with **thunderstorm, lightning & gusty winds speed reaching 40-50 kmph** likely over Andaman & Nicobar Islands, Madhya Pradesh, Vidarbha, Chhattisgarh, Gangetic West Bengal, Bihar, Jharkhand, Odisha during 26<sup>th</sup> June-01<sup>st</sup> July.

#### Northeast India:

- ✓ Light/moderate rainfall at most places accompanied with **thunderstorm, lightning and isolated heavy rainfall** likely to continue over Northeast India during next 7 days with **very heavy rainfall** over Arunachal Pradesh on 30<sup>th</sup> June.

#### South Peninsular India:

- ✓ **Extremely heavy rainfall (>20 cm/24 hours) likely at isolated places over Kerala and South Interior Karnataka on 26<sup>th</sup> June.**
- ✓ Isolated **heavy rainfall** likely over Kerala during 26<sup>th</sup>-29<sup>th</sup>; Karnataka, Tamil Nadu during 26<sup>th</sup>-28<sup>th</sup> June; Coastal Andhra Pradesh, Telangana, Lakshadweep on 26<sup>th</sup> June with **very heavy rainfall** over Ghat areas of Tamil Nadu on 26<sup>th</sup>; Coastal Karnataka on 26<sup>th</sup> & 27<sup>th</sup>; and Kerala on 27<sup>th</sup> & 28<sup>th</sup> June.
- ✓ **Strong surface winds** (speed reaching 40-60 kmph) very likely over Karnataka, Coastal Andhra Pradesh & Yanam, Rayalaseema, Telangana during 26<sup>th</sup>-29<sup>th</sup> June.
- ✓ Light/moderate rainfall at many/some places over Kerala & Mahe, Lakshadweep, Coastal Karnataka; isolated to scattered rainfall accompanied with isolated **thunderstorm, lightning** over Coastal Andhra Pradesh & Yanam, Telangana, Interior Karnataka during 26<sup>th</sup>-29<sup>th</sup> June.

#### Fishermen Warnings:

Arabian Sea:

- ❖ Fishermen are advised not to venture off south Gujarat coast for day 1 & day 2 (26<sup>th</sup> & 27<sup>th</sup> June), along and off Gujarat coast for day 3 to day 5 (28<sup>th</sup> June to 01<sup>st</sup> July); off Konkan coast for day 1 (26<sup>th</sup> June), north Arabian Sea along and off Konkan-Goa coast for day 3 to day 5 (28<sup>th</sup> June to 01<sup>st</sup> July); along and off Karnataka, Kerala coasts and Lakshadweep area for day 1 to day 3 (26<sup>th</sup> to 29<sup>th</sup> June)
- ❖ Fishermen are advised not to venture along and off the Somalia coast and adjoining sea areas, Oman and adjoining Yemen coast & adjoining sea areas; over central & adjoining north, south Arabian Sea for day 1 to day 5 (26<sup>th</sup> June to 01<sup>st</sup> July)

Bay of Bengal:

- ❖ Fishermen are advised not to venture along and off north Andhra Pradesh & adjoining Odisha coast for day 2 & day 3 (27<sup>th</sup> & 28<sup>th</sup> June), off north Andhra Pradesh coast; southeast Bay of Bengal for day 4 & day 5 (29<sup>th</sup> & 30<sup>th</sup> June); along and off Odisha and West Bengal coasts; over many parts of Northwest, westcentral Bay of Bengal and adjoining eastcentral Bay of Bengal for day 1 (26<sup>th</sup> June); most parts of central Bay of Bengal for day 2 and day 5 (27<sup>th</sup> June to 01<sup>st</sup> July); many parts of north Bay of Bengal for day 4 & day 5 (29<sup>th</sup> & 30<sup>th</sup> June); some parts of southwest Bay of Bengal for day 1, day 2 and day 4 (26<sup>th</sup>, 27<sup>th</sup> & 29<sup>th</sup> June).
- ❖ Total suspension of fishing operations is suggested over above mentioned areas and dates.

#### ii. Weather conditions and forecast over Delhi/NCR during 26<sup>th</sup> June to 29<sup>th</sup> June, 2025 (Annexure V)

For more details, kindly refer National Weather Bulletin:

[https://mausam.imd.gov.in/responsive/all\\_india\\_forecast\\_bulletin.php](https://mausam.imd.gov.in/responsive/all_india_forecast_bulletin.php)

For District wise warnings refer: <https://mausam.imd.gov.in/responsive/districtWiseWarningGIS.php>



**Rainfall recorded (in cm) during past 24 hours till 0830 hours IST of today, the 26<sup>th</sup> June:**

- ❖ **Kerala:** Lower Sholayar AWS (dist Thrissur) 24; Nilambur (dist Malappuram) 17; Vytthiri (dist Wynad), Peermade To (dist Idukki) 15 Each; Udumbannoor AWS (dist Idukki) 14; Thodupuzha (dist Idukki) 13; Idukki (dist Idukki), Nilambur AWS (dist Malappuram) 12 Each; Munnar Kseb (dist Idukki), Athirappalli AWS (dist Thrissur), Kalpetta AWS (dist Wynad) 11 Each;
- ❖ **Gujarat Region:** Dolvan (dist Tapi) 19; Umerpada (dist Surat) 14; Vansda (dist Navsari) 13; Sagbara (dist Narmada), Karjan (dist Vadodara), Bardoli (dist Surat), Khergam (dist Navsari) 12 Each; Waghai (dist Dangs), Kamrej (dist Surat) 11 Each; Chikhli (dist Navsari), Valod (dist Tapi), Dediapada (dist Narmada) 10 Each; Mahuva (dist Surat), Valsad (dist Valsad), Dang Kvk AWS (dist Dangs) 9 Each; Pardi (dist Valsad), Ukai (dist Surat) 8 Each; Jambughoda (dist Panchmahal), Ghoghamba (dist Panchmahal), Vyara (dist Tapi), Naswadi (dist Chhota Udepur), Padra (dist Vadodara), Narmada Kvk AWS (dist Narmada), Bodeli (dist Chhota Udepur), Kalol (dist Panchmahal) 7
- ❖ **Tamil Nadu:** Avalanche (dist Nilgiris) 18; Sholayar (dist Coimbatore) 17; Valparai PTO (dist Coimbatore) 13; Chinnakalar (dist Coimbatore), Cincona (dist Coimbatore) 12 Each; Upasi Tea Research AWS (dist Coimbatore) 11; Valparai Taluk Office (dist Coimbatore), Upper Bhavani (dist Nilgiris), Valparai Pap (dist Coimbatore) 9 Each; Periyar (dist Theni) 8; Pollachi (dist Coimbatore), Adavinainnarkoil Dam (dist Tenkasi) 7 Each;
- ❖ **South Interior Karnataka:** Virajpet (dist Kodagu) 17; Napoklu (dist Kodagu) 16; Agumbe Emo (dist Shivamogga) 14; Kalasa (dist Chikkamagaluru) 12; Kammardi (dist Chikkamagaluru) 11; Sringeri HMS (dist Chikkamagaluru), Kottigehara (dist Chikkamagaluru) 10 Each; Hunchadakatte (dist Shivamogga) 9; Somwarpet (dist Kodagu), Koppa (dist Chikkamagaluru) 8 Each; Ponnampet PWD (dist Kodagu) 7;
- ❖ **Odisha:** Patnagarh (dist Bolangir) 17; Tikarpara (dist Angul) 16; Kotpad (dist Koraput) 15; Narsinghpur (dist Cuttack), Papadahandi (dist Nawarangpur) 12 Each; Gania (dist Nayagarh) 11; Kosagumda (dist Nawarangpur), Birmaharajpur (dist Sonepur), Th Rampur (dist Kalahandi) 10 Each; Nawarangpur (dist Nawarangpur), Kantamal (dist Boudhgarh), Remuna (dist Balasore), Boudhgarh (dist Boudhgarh) 9 Each;
- ❖ **Jammu:** Katra (dist Reasi) 14; Reasi ARG (dist Reasi), Reasi Kvk AWS (dist Reasi) 8 Each;
- ❖ **Coastal Karnataka:** Dharmasthala (dist Dakshina Kannada) 14; Yellapur (dist Uttara Kannada), Belthangadi (dist Dakshina Kannada) 9 Each; Castle Rock (dist Uttara Kannada) 8;
- ❖ **Vidarbha:** Malegaon (dist Washim) 14; Mahagaon (dist Yeotmal), Ghatanji (dist Yeotmal) 13 Each; Umerkhed (dist Yeotmal), Washim (dist Washim) 11 Each; Arni (dist Yeotmal) 9; Manora (dist Washim), Pandherikawara (dist Yeotmal), Risod (dist Washim), Mehkar (dist Buldhana) 8 Each
- ❖ **Telangana:** Tamsi (dist Adilabad) 13; Talamadugu (dist Adilabad) 12; Aswaraopeta (dist B. Kothagudem) 10; Adilabad (dist Adilabad), Bodhan (dist Nizamabad), Bazarhathnoor (dist Adilabad) 9 Each; Yeda Palle (dist Nizamabad), Thimmapur (dist Karimnagar), Medak (dist Medak), Medak(ARG) (dist Medak) 8 Each; Ranjal (dist Nizamabad), Banswada (dist Kamareddy), Varni (dist Nizamabad) 7 Each;
- ❖ **West Madhya Pradesh:** Udaigarh (dist Alirajpur) 13; Neemuch-aws (dist Neemuch) 10; Ashta-aws (dist Sehore) 9; Badnawar (dist Dhar), Timarni (dist Harda) 8 Each; Bhabhra (dist Alirajpur), Rajpur (dist Barwani) 7 Each;
- ❖ **East Rajasthan:** Bhungra SR (dist Banswara) 11; Masuda SR (dist Ajmer), Jhadol SR (dist Udaipur), Danpur (dist Banswara) 8 Each;
- ❖ **Chhattisgarh:** Darri (dist Korba) 11; Gharghoda (dist Raigarh) 9; Bakavand (dist Bastar), Patan (dist Durg), Patharia (dist Mungeli), Patna (dist Koriya) 8 Each; Baloda Bazar (dist Baloda Bazar), Bhatapara (dist Baloda Bazar), Tilda (dist Raipur), Lalpur Thana (dist Mungeli), Chhal (dist Raigarh), Gangalur (dist Bijapur) 7 Each;
- ❖ **Madhya Maharashtra:** Akkalkuwa (dist Nandurbar) 10; Chandgad (dist Kolhapur) 9; Ajra (dist Kolhapur) 8; Radhanagari (dist Kolhapur) 7;
- ❖ **Punjab:** Tibri (dist Gurdaspur) 9;
- ❖ **East Madhya Pradesh:** Palera (dist Tikamgarh) 9; Mohangarh (dist Tikamgarh) 8;
- ❖ **Himachal Pradesh:** Palampur (dist Kangra) 8; Banjar (dist Kullu) 7;
- ❖ **North Interior Karnataka:** Khanapur (dist Belagavi) 8;
- ❖ **Jharkhand:** Hendigir (dist Hazaribag) 8; Ramgarh (dist Ramgarh), Mandu (dist Ramgarh) 7 Each;
- ❖ **Marathwada:** Nanded - IMD Parttime (dist Nanded) 8; Tondapur- ARG (dist Hingoli) 7;
- ❖ **Uttarakhand:** Banbasa (dist Champawat), Loharkhet (dist Bageshwar) 8 Each; Purola (dist Uttarkashi), Kapkot (dist Bageshwar) 7 Each;
- ❖ **Haryana:** Jagadhari (dist Yamuna Nagar), Tajewala (dist Yamuna Nagar) 8 Each; Bilaspur (dist Yamuna Nagar) 7;
- ❖ **Assam:** Dudhnoi ARG (dist Goalpara) 7.

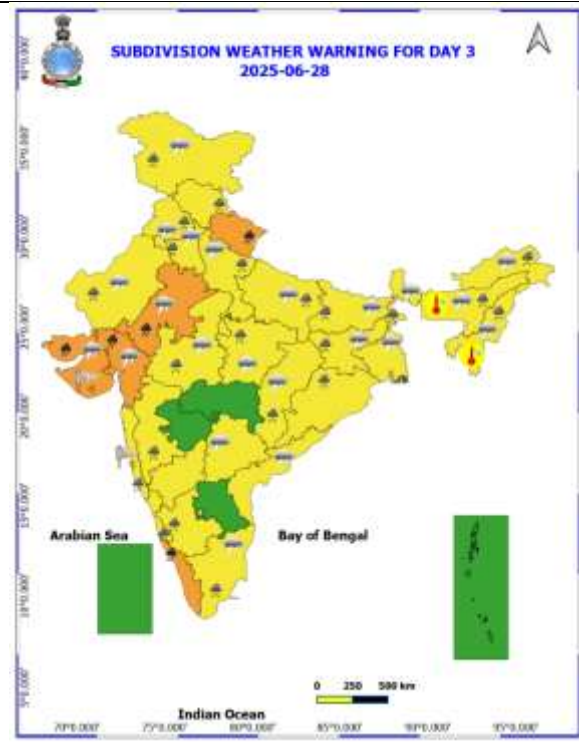
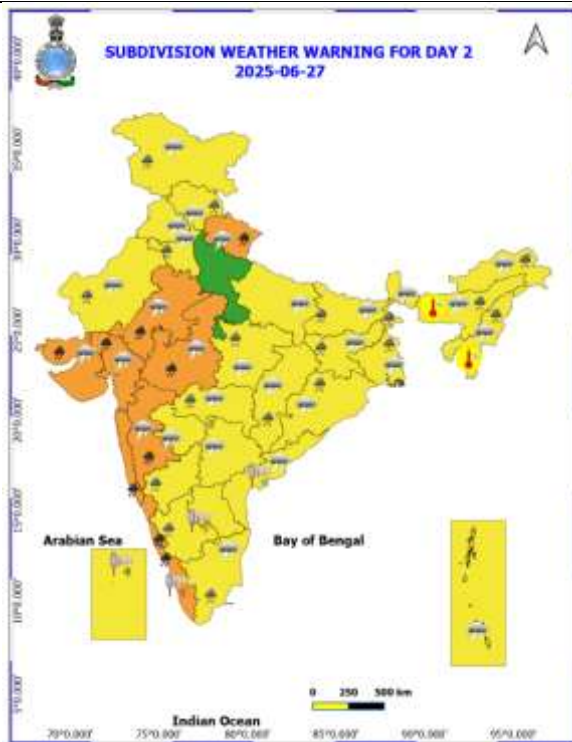
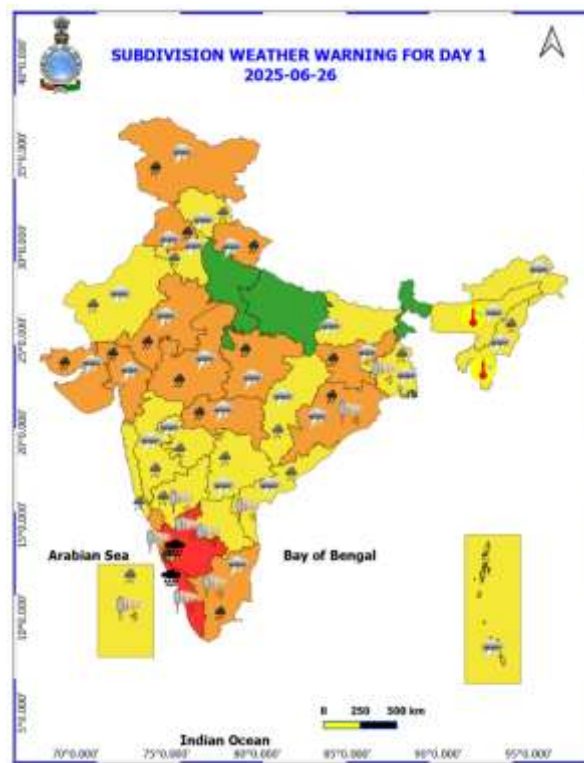
**Realised Gusty Winds (kmph) During Past 24hours ending at 0830 hrs IST of today the 26<sup>th</sup> June:**

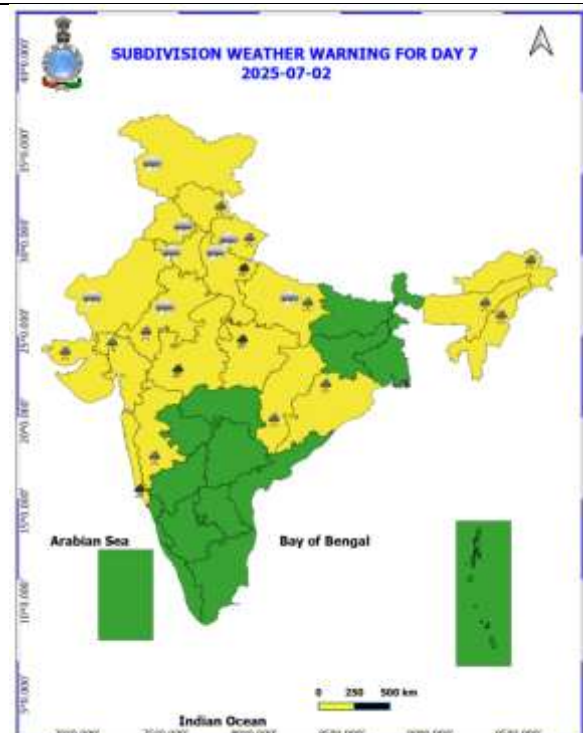
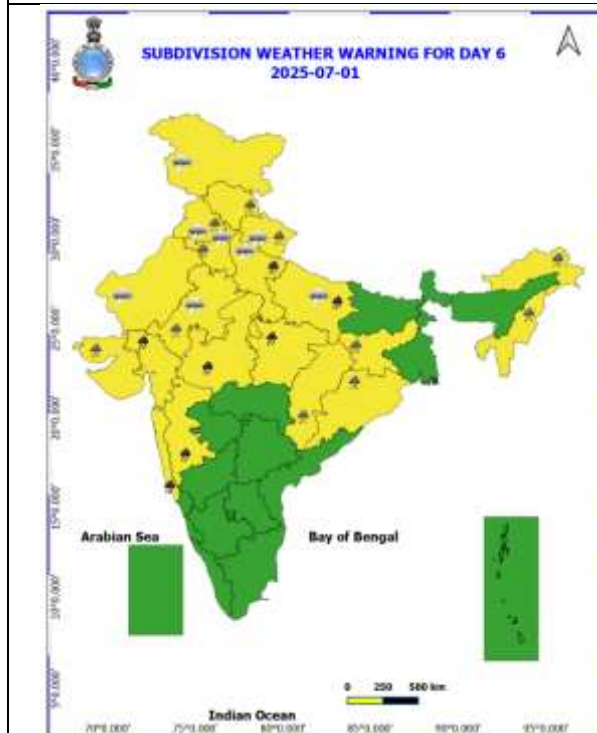
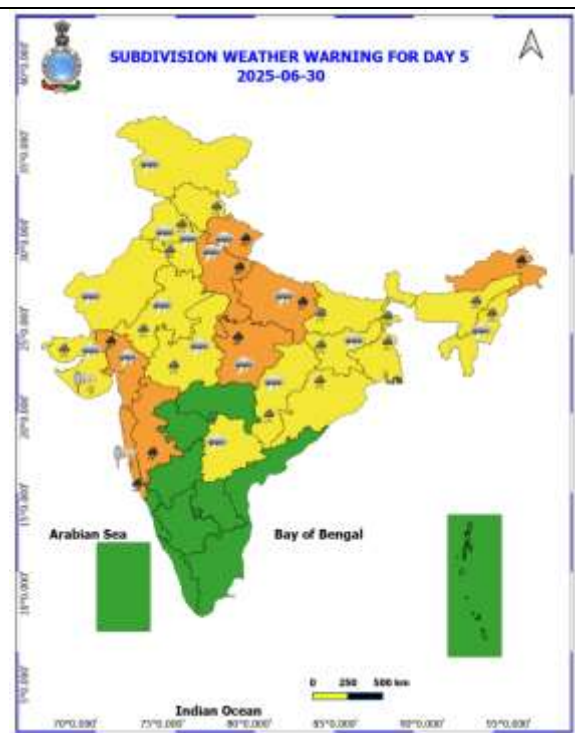
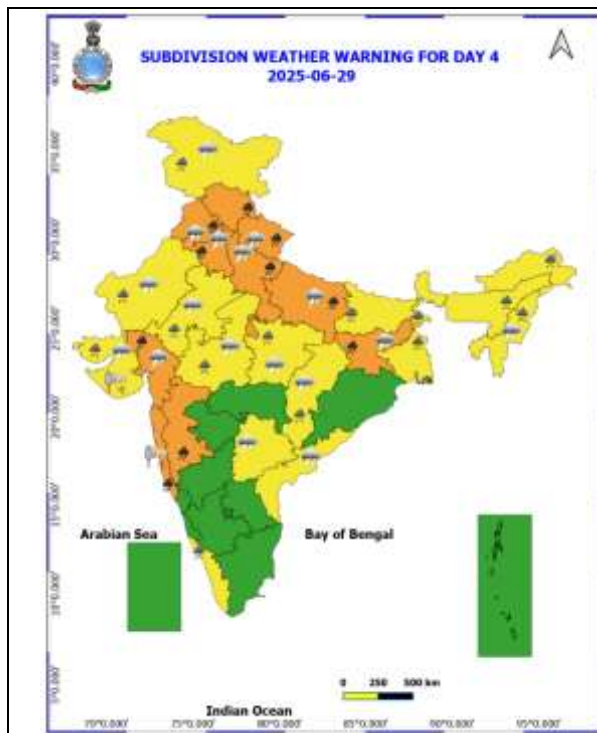
- ❖ **Himachal Pradesh:** Tabo-52, Kukumseri-48, Bajaura-37;
- ❖ **Gangetic West Bengal:** Durgapur (50); Dum Dum (44); Burdwan (41); Amta, Nimpith (37); Sonarpur (35);
- ❖ **Jharkhand:** Bano-Simdega (48); Giridih (43); Simdega (33); Pakur, Palamu (31), Deoghar, Barhi (30);
- ❖ **Uttarakhand:** Mukteshwar-48, Pantnagar-33, Jaspur-31, Roorkee-30;
- ❖ **East Uttar Pradesh:** Mirzapur Aws-48;
- ❖ **Madhya Maharashtra:** Kurvande (Pune) - 48 Kmph, Mahabaleshwar- 48 Kmph.
- ❖ **West Madhya Pradesh:** Gwalior 46, Morena 43;
- ❖ **Bihar:** Begusarai (44); Bhojpur (41); Sukhet (39); East Champaran, Iit Patna (37); Madhepura, Saraiya, Agwanpur (35);
- ❖ **Andaman & Nicobar Islands:** Sri Vijayapuram (44); Shaheed Dweep (30);
- ❖ **Punjab:** Faridkot And Hoshiarpur 44;
- ❖ **Haryana:** Karnal 44, Panipat 43;
- ❖ **Tamil Nadu:** Veda sandur(Dindigul)-54, Kadavur Taluk\_Office (Karur)- 50, Kovilpatti\_Amfu(Thoothukudi)-46, Thiruchendur,(Thoothukudi)-46, Tenkasi-43, Hosur(Krishnagiri)-46;
- ❖ **Marathwada:** Beed (Ambejogai)-43 Kmph,



Table-1								
7 Days Rainfall Forecast								
S.No.	Subdivision	26- Jun	27- Jun	28- Jun	29- Jun	30- Jun	1- Jul	2- Jul
		Day 1	Day 2	Day 3	Day 4	Day 5	Day 6	Day 7
1	ANDAMAN & NICOBAR ISLANDS	FWS	WS	WS	WS	FWS	FWS	FWS
2	ARUNACHAL PRADESH	SCT	SCT	FWS	FWS	FWS	FWS	FWS
3	ASSAM & MEHGHALAYA	SCT	FWS	SCT	FWS	FWS	FWS	FWS
4	NAGALAND, MANIPUR, MIZORAM AND TRIPURA	FWS	FWS	SCT	FWS	FWS	FWS	FWS
5	SUB HIMALAYAN WEST BENGAL & SIKKIM	FWS	FWS	WS	WS	WS	WS	FWS
6	GANGETIC WEST BENGAL	WS	WS	WS	WS	WS	WS	FWS
7	ODISHA	WS	FWS	FWS	SCT	FWS	FWS	FWS
8	JHARKHAND	WS	WS	WS	WS	WS	WS	FWS
9	BIHAR	SCT	FWS	FWS	FWS	FWS	FWS	FWS
10	EAST UTTAR PRADESH	ISOL	SCT	FWS	WS	WS	WS	FWS
11	WEST UTTAR PRADESH	ISOL	SCT	FWS	WS	WS	WS	WS
12	UTTARAKHAND	FWS	WS	WS	WS	WS	FWS	FWS
13	HARYANA, CHANDIGARH & DELHI	FWS	SCT	WS	WS	WS	WS	FWS
14	PUNJAB	WS	SCT	FWS	WS	WS	WS	FWS
15	HIMACHAL PRADESH	WS	WS	FWS	WS	WS	WS	FWS
16	JAMMU AND KASHMIR AND LADAKH	WS	WS	SCT	SCT	SCT	SCT	SCT
17	WEST RAJASTHAN	SCT	FWS	FWS	SCT	SCT	ISOL	ISOL
18	EAST RAJASTHAN	FWS	FWS	FWS	FWS	FWS	SCT	SCT
19	WEST MADHYA PRADESH	WS	WS	FWS	FWS	FWS	WS	WS
20	EAST MADHYA PRADESH	WS	WS	WS	WS	WS	WS	WS
21	GUJRAT REGION	WS	WS	WS	WS	WS	WS	WS
22	SAURASHTRA & KUTCH	WS	WS	WS	WS	WS	WS	WS
23	KONKAN & GOA	WS	WS	WS	WS	WS	WS	WS
24	MADHYA MAHARASHTRA	SCT	SCT	SCT	SCT	SCT	SCT	FWS
25	MARATHWADA	FWS	SCT	ISOL	ISOL	ISOL	ISOL	SCT
26	VIDARBHA	WS	FWS	SCT	SCT	FWS	FWS	WS
27	CHHATTISGARH	WS	WS	WS	WS	WS	WS	FWS
28	COASTAL ANDHRA PRADESH	WS	FWS	SCT	ISOL	ISOL	SCT	SCT
29	TELANGANA	FWS	SCT	ISOL	ISOL	ISOL	ISOL	ISOL
30	RAYALASEEMA	SCT	ISOL	ISOL	ISOL	ISOL	ISOL	ISOL
31	TAMILNADU & PUDUCHERRY	SCT	SCT	SCT	ISOL	ISOL	ISOL	ISOL
32	COSTAL KARNATAKA	WS	WS	WS	WS	WS	WS	WS
33	NORTH INTERIOR KARNATAKA	FWS	SCT	SCT	SCT	ISOL	ISOL	SCT
34	SOUTH INTERIOR KARNATAKA	FWS	SCT	SCT	SCT	ISOL	ISOL	ISOL
35	KERALA AND MAHE	WS	WS	WS	FWS	FWS	FWS	FWS
36	LAKSHADWEEP	WS	WS	WS	FWS	FWS	SCT	SCT

- As the lead period increases forecast accuracy decreases.





- Action may be taken based on ORANGE AND REDCOLOUR warnings.
- Vulnerable regions likely urban and hilly areas action may be initiated for heavy rainfall warning.
- As the lead period increases forecast accuracy decreases.

Detailed districtwise Multi Hazard weather warning for next five days available at  
<https://mausam.imd.gov.in/responsive/districtWiseWarningGIS.php>



**Weather forecast over Delhi/NCR during 26<sup>th</sup> to 29<sup>th</sup> June 2025****Past Weather:**

There has been fall in the minimum up to 1°C and fall in maximum temperature up to 1 - 3°C over Delhi/NCR during the past 24 hours. The maximum and minimum temperatures over Delhi were around 33 to 35 °C and 25 to 28°C, respectively. The minimum temperatures were near normal and the maximum temperatures were below normal up to 2 to 5°C. Partly cloudy sky conditions with predominant surface wind from the northeast/east direction with wind speeds up to 16 kmph prevailed during the past 24 hours. Partly cloudy sky conditions with wind speed less than 10 kmph from the southeast direction prevailed over the region in the forenoon today.

**Weather Forecast:**

**26.06.2025:** Partly cloudy sky. Very light to light rain accompanied with thunderstorm/lightning. The maximum temperatures over Delhi are likely to be in the range of 36 to 38°C. The maximum temperature will be near normal. The predominant surface wind will likely be from the southeast direction with a wind speed of less than 15 kmph in the afternoon. The wind speed will gradually decrease becoming 10-12 kmph from the southeast direction during evening and night.

**27.06.2025:** Partly cloudy sky. Very light to light rain accompanied with thunderstorm/lightning. The maximum and minimum temperatures over Delhi are likely to be in the range of 36 to 38°C and 26 to 28°C respectively. The minimum temperature will be near normal and the maximum temperature will be near normal. The predominant surface wind will likely be from the southeast direction with a wind speed of less than 15 kmph during the morning hours. The wind speed will gradually decrease becoming 10-12 kmph from the southeast direction in the afternoon. It will increase becoming less than 15 kmph from the southeast direction during evening and night.

**28.06.2025:** Generally cloudy sky. Light to moderate rain accompanied with thunderstorm/lightning towards evening/night. The maximum and minimum temperatures over Delhi are likely to be in the range of 33 to 35°C and 25 to 27°C, respectively. The minimum temperature will be below normal up to 1 to 2°C, and the maximum temperature will be below normal up to 2 to 4°C. The predominant surface wind will likely be from the southeast direction with a wind speed of less than 10 kmph during the morning hours. The wind speed will gradually increase becoming less than 15 kmph from the southeast direction in the afternoon. It will decrease to less than 12 kmph from the southeast direction during the evening and night.

**29.06.2025:** Generally cloudy sky. Light to moderate rain accompanied with thunderstorm/lightning. The maximum and minimum temperatures over Delhi are likely to be in the range of 32 to 34°C and 25 to 27°C, respectively. The minimum temperature will be below normal up to 1 to 2 °C, and the maximum temperature will be below normal up to 3 to 5°C. The predominant surface wind will likely be from the southwest direction with a wind speed of less than 15 kmph during the morning hours. The wind speed will gradually decrease becoming less than 10 kmph from the southeast direction in the afternoon. It will increase to less than 15 kmph from the southeast direction during the evening and night.

**Impact expected and Action Suggested due to thunderstorm with lightning/gusty winds:**

- Be cautious and take precautionary measures, though there is the likelihood of thunderstorm/lightning and gusty winds (speed 40 – 50 kmph) temporarily reaching 60 kmph during thunderstorm with dust rising surface winds.
- Breaking of tree branches, uprooting of large avenue trees, Large dead limbs blown from trees, Damage to standing crops, Minor to major damage to power and communication lines due to breaking of branches, Partial damage to vulnerable structures due to strong winds, Loose objects may fly.
- People are advised to keep a watch on the weather for worsening conditions and be ready to move to safer places accordingly, stay indoors, close windows & doors and avoid travel if possible, take safe shelters; do not take shelter under trees, do not lie on concrete floors and do not lean against concrete walls, unplug electrical/ electronic appliances, immediately get out of water bodies, keep away from all the objects that conduct electricity.



**Impact & Action Suggested due to extremely heavy falls/ very heavy rainfall:**

- ✓ **Extremely heavy rainfall (>20 cm/24 hours) likely at isolated places over Kerala and South Interior Karnataka on 26<sup>th</sup> June.**
- ✓ **Very heavy rainfall** over Konkan & Goa, Ghat areas of Madhya Maharashtra, Gujarat state during next 7 days; Jammu & Kashmir, Ghat areas of Tamil Nadu, Vidarbha and Odisha on 26<sup>th</sup>; Himachal Pradesh, Haryana on 29<sup>th</sup>; East Rajasthan during 26<sup>th</sup>-28<sup>th</sup>; Uttarakhand during 26<sup>th</sup>-30<sup>th</sup>, East Rajasthan during 26<sup>th</sup>-28<sup>th</sup>; Punjab on 26<sup>th</sup> & 29<sup>th</sup>; Uttar Pradesh during 29<sup>th</sup> June-02<sup>nd</sup> July; West Madhya Pradesh on 26<sup>th</sup>, 27<sup>th</sup> June, 01<sup>st</sup> & 02<sup>nd</sup> July; East Madhya Pradesh on 26<sup>th</sup>, 30<sup>th</sup> June & 01<sup>st</sup> July; on 26<sup>th</sup>; Coastal Karnataka on 26<sup>th</sup>, 27<sup>th</sup>; Jharkhand on 26<sup>th</sup> & 29<sup>th</sup> June and Kerala on 27<sup>th</sup> & 28<sup>th</sup> June.

**Impact Expected**

- Localized Flooding of roads, water logging in low lying areas and closure of underpasses mainly in urban areas of the above region.
- Occasional reduction in visibility due to heavy rainfall.
- Disruption of traffic in major cities due to water logging in roads leading to increased travel time.
- Minor damage to kutcha roads.
- Possibilities of damage to vulnerable structure.
- Localized Landslides/Mudslides/landslips/mudslips/landsinks/mudsinks.
- Damage to horticulture and standing crops in some areas due to inundation.
- It may lead to riverine flooding in some river catchments (for riverine flooding please visit Web page of CWC)

**Action Suggested**

- Check for traffic congestion on your route before leaving for your destination.
- Follow any traffic advisories that are issued in this regard.
- Avoid going to areas that face the water logging problems often.
- Avoid staying in vulnerable structure.

**Agromet advisories for likely impact of Heavy / Heavy to Very Heavy / Extremely Heavy Rainfall  
(Based on the IBF and advisories issued by different AMFUs)**

- In **Gujarat**, postpone nursery sowing of rice. Ensure proper drainage facilities in already sown rice nurseries, sugarcane fields, banana and mango plantations to prevent waterlogging. Provide support to sugarcane and banana to prevent lodging. In **Saurashtra & Kutch**, Drain out excess rain water from vegetable nurseries and horticultural plantations.
- In **Konkan & Goa** make arrangement to drain out excess water from rice nurseries, fields of finger millet, groundnut and orchards to prevent waterlogging. In **ghat areas of Madhya Maharashtra**, drain out excess water from rice nurseries, vegetables and orchards to prevent waterlogging. In **Vidarbha**, keep already harvested produce at safer places and provide mechanical support to newly planted orchards and vegetables to prevent them from lodging.
- In **West Madhya Pradesh**, Postpone harvesting of maize. Postpone sowing of pearl millet, soybean, pigeon pea and paddy nurseries. Make necessary arrangements to drain out excess water from vegetables and orchards to avoid waterlogging. In **Kymore Plateau and Satpura Hill Zone of East Madhya Pradesh**, harvest matured green gram and black gram crop and store in a safe place. In **Gird Zone of West Madhya Pradesh**, harvest matured maize crop and keep it in safe place. Postpone sowing of soybean and transplanting of chilli, tomato, brinjal etc. and ensure proper drainage in already sown / transplanted fields.
- In **Chhattisgarh**, ensure proper drainage in rice nurseries.
- **Jammu and Kashmir** - postpone sowing of maize. Drain out excess water from the fields of maize and vegetables.
- In **Sub-Montane and Low Hills Sub-Tropical Zone of Himachal Pradesh**, provide drainage in maize and vegetable fields. Strengthen the support for creepers and tall vegetable crops (tomato, capsicum etc.). In **Mid Hills Sub-Humid Zone of Himachal Pradesh**, harvest matured fruits of plum, pear and stonefruit to minimize losses due to heavy rains. Make proper drainage channels in the fields of maize, apple, pear, pomegranate, kiwi, cucumber and tomato to avoid waterlogging. Provide support to cucumber vines and tomato plants to prevent lodging.
- In **Uttarakhand**, make proper drainage channels in rice nurseries, pigeon pea, groundnut, maize, soybean, barnyard millet and finger millet to avoid waterlogging. In **Bhabar and Tarai Zone of Uttarakhand**, harvest matured spring maize crop and vegetables (pumpkin, tomato, okra, chilli, French bean etc.) and store in safe place during clear weather.
- In **Punjab**, drain out excess water from already sown cotton, rice, vegetables and fruit crops.
- In **Haryana** - Make necessary arrangements to drain out excess water from cotton and pearl millet fields.
- In **East Rajasthan**, harvest the matured vegetables such as okra and cucurbits and store them in safe place. Make arrangement for draining out excess water from the fields of groundnut and green gram.
- In **Jharkhand**, make necessary arrangements to drain out excess water from already sown maize fields, rice and vegetable nurseries.
- In **Odisha**, ensure proper drainage from already sown rice nurseries, fields of maize and vegetables to prevent waterlogging. Cover rice and vegetable nurseries with plastic sheets to prevent washing away of seeds.
- In **Coastal Karnataka**, ensure proper drainage facilities in rice nurseries, banana, coconut and arecanut plantations to prevent water logging. In **South Interior Karnataka**, cover young seedlings of rice with plastic sheets or agro-shade nets to protect them from heavy rains. Provide adequate drainage to remove excess water from rice nurseries, coffee, cardamom, coconut and arecanut plantations to prevent water logging. Provide support to sugarcane and banana to prevent lodging. In **North Interior Karnataka**, drain out excess water from the crops which are at seedling stage to prevent water logging.
- In ghat regions of **Tamilnadu**, provide adequate drainage in rice nurseries, sorghum, maize, pulses, groundnut, sugarcane, orchards and vegetable crops.
- In **Kerala**, ensure proper drainage facilities in rice nurseries, transplanted rice fields, coconut and banana plantations to prevent water logging. Undertake propping in banana to protect the plants from heavy rains.

**Livestock / Fishery**

- Keep the animals inside the shed during heavy rainfall and provide them balanced feed.
- Store feed and fodder in a safe place to prevent spoilage.
- Construct an outlet with proper netting around the ponds to drain out excess water, thereby preventing fish from escaping in case of overflow.

**Flash flood guidance:**

24 hours Outlook for the Flash Flood Risk (FFR) till 1130 IST of 27-06-2025 :

Moderate to High flash flood risk likely over few watersheds & neighbourhoods of following Met Sub-divisions during next 24 hours.

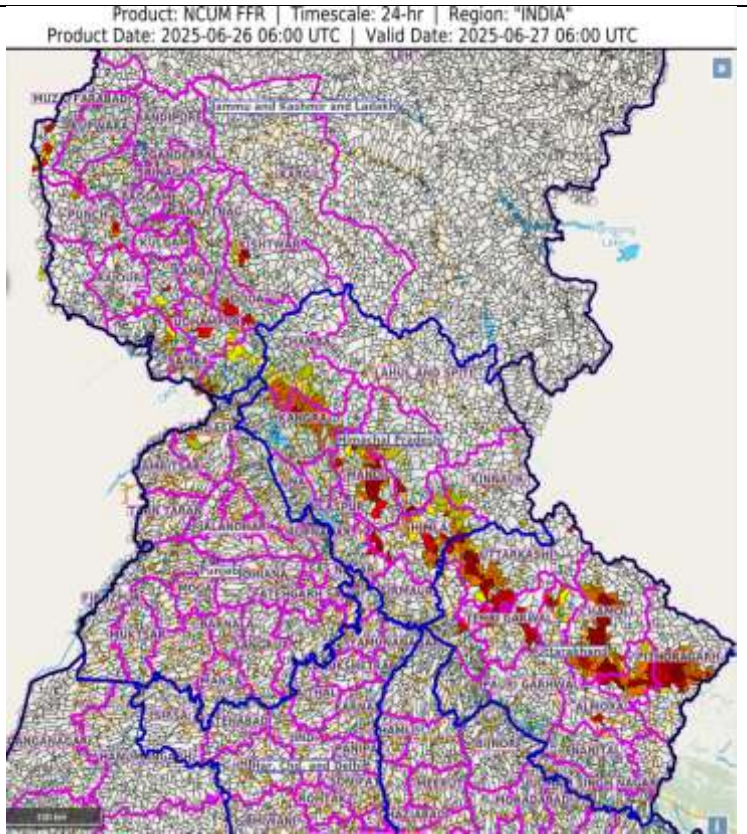
Himachal Pradesh - Chamba, Hamirpur, Kangra, Kinnaur, Kullu, Mandi, Shimla and Solan districts.

Jammu & Kashmir & Ladakh - Baramula, Doda, Jammu, Kathua, Kistwar, Kulgam, Punch, Rajouri, Riasi, Samba, Shopian, Udhampur, Mirpur and Muzaffarabad districts.

Punjab - Gurdaspur district.

Uttarakhand - Almora, Bageshwar, Chamoli, Dehradun, Pithoragarh, Rudraprayag, Tehri Garwal and Uttarkashi districts.

Surface runoff/ Inundation may occur at some fully saturated soils & low-lying areas over Area of Concern (AoC) as shown in map due to expected rainfall occurrence in next 24 hours.

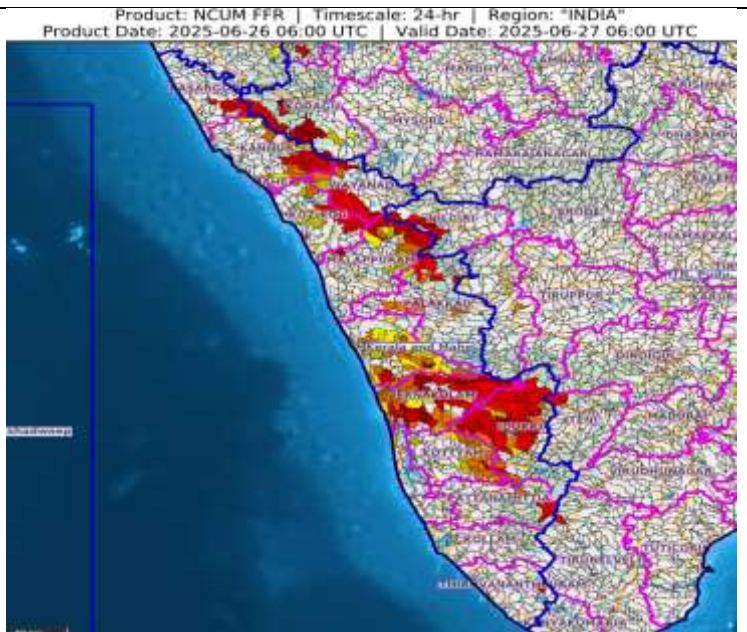


24 hours Outlook for the Flash Flood Risk (FFR) till 1130 IST of 27-06-2025 :

Moderate to High flash flood risk likely over few watersheds & neighbourhoods of following Met Sub-divisions during next 24 hours.

Kerala & Mahe - Alappuzha, Ernakulam, Idukki, Kannur, Kasargod, Kottayam, Kozikod, Mahe, Malappuram, Palakkad, Pattanamittia, Thiruvananthapuram, Trishur and Wayanad districts.

Surface runoff/ Inundation may occur at some fully saturated soils & low-lying areas over Area of Concern (AoC) as shown in map due to expected rainfall occurrence in next 24 hours.





## Legends & abbreviations:

- ❖ **Heavy Rain:**64.5-115.5mm; **Very Heavy Rain:**115.6-204.4mm; **Extremely Heavy Rain:** >204.4mm.
- ❖ **Obsy:** Observatory; Automatic Weather Station; **ARG:** Automatic Rain Gauge; **dist:** District; **NH:** National Highway; **KVK:** Krishi Vigyan Kendra; **DVC:** Damodar Valley Corporation; **PTO:** Part Time Office, **Aero:** Aerodrome, **IAF:** Indian Air Force.
- ❖ **Region wise classification of meteorological Sub-Divisions:**
  - **Northwest India:** Western Himalayan Region (Jammu-Kashmir-Ladakh-Gilgit-Baltistan-Muzaffarabad, Himachal Pradesh and Uttarakhand); Punjab, Haryana-Chandigarh-Delhi; West Uttar Pradesh, East Uttar Pradesh, West Rajasthan and East Rajasthan.
  - **Central India:** West Madhya Pradesh, East Madhya Pradesh, Vidarbha and Chhattisgarh.
  - **East India:** Bihar, Jharkhand, Sub-Himalayan West Bengal & Sikkim; Gangetic West Bengal, Odisha and Andaman & Nicobar Islands.
  - **Northeast India:** Arunachal Pradesh, Assam & Meghalaya and Nagaland, Manipur, Mizoram & Tripura.
  - **West India:** Gujarat Region, Saurashtra & Kutch, Konkan & Goa, Madhya Maharashtra and Marathawada.
  - **South India:** Coastal Andhra Pradesh & Yanam, Telangana, Rayalaseema, Coastal Karnataka, North Interior Karnataka, South Interior Karnataka, Kerala & Mahe, Tamil Nadu, Puducherry & Karaikal and Lakshadweep.

## LEGENDS

1. अंडमान और निकोबार द्वीपसमूह

2. अरुणाचल प्रदेश

3. असम और मेघालय

4. नागालैंड, मणिपुर, मिजोरम और त्रिपुरा

5. उप-हिमालयी पश्चिम बंगाल और सिक्किम

6. गंगीय पश्चिम बंगाल

7. ओडिशा

8. झारखंड

9. बिहार

10. पूर्वी उत्तर प्रदेश

11. पश्चिम उत्तर प्रदेश

12. उत्तराखंड

13. हरियाणा, चंडीगढ़ और दिल्ली

14. पंजाब

15. हिमाचल प्रदेश

16. जम्मू और कश्मीर और लद्दाख

17. पश्चिम राजस्थान

18. पूर्वी राजस्थान

19. पश्चिम मध्य प्रदेश

20. पूर्वी मध्य प्रदेश

21. गुजरात

22. सौराष्ट्र

23. कोंकण और गोवा

24. मध्य महाराष्ट्र

25. मराठवाड़ा

26. विदर्भ

27. छत्तीसगढ़

28. तटीय आंध्र प्रदेश और यनम

29. तेलंगाना

30. रायलसीमा

31. तमिलनाडु, पुडुचेरी और कराईकल

32. तटीय कर्नाटक

33. आंतरिक उत्तरी कर्नाटक

34. आंतरिक दक्षिणी कर्नाटक

35. केरल और माहे

36. लक्षद्वीप



1. Andaman & Nicobar Islands

2. Arunachal Pradesh

3. Assam & Meghalaya

4. Nagaland, Manipur, Mizoram & Tripura

5. Sub-Himalayan West Bengal & Sikkim

6. Gangetic West Bengal

7. Odisha

8. Jharkhand

9. Bihar

10. East Uttar Pradesh

11. West Uttar Pradesh

12. Uttarakhand

13. Haryana, Chandigarh & Delhi

14. Punjab

15. Himachal Pradesh

16. Jammu & Kashmir and Ladakh

17. West Rajasthan

18. East Rajasthan

19. West Madhya Pradesh

20. East Madhya Pradesh

21. Gujarat

22. Saurashtra

23. Konkan & Goa

24. Madhya Maharashtra

25. Marathwada

26. Vidarbha

27. Chhattisgarh

28. Coastal Andhra Pradesh & Yanam

29. Telangana

30. Rayalaseema

31. Tamilnadu, Puducherry & Karaikal

32. Coastal Karnataka

33. North Interior Karnataka

34. South Interior Karnataka

35. Kerala & Mahe

36. Lakshadweep

## SPATIAL DISTRIBUTION (% of Stations reporting)

% Stations	Category	% Stations	Category
76-100	Widespread (WS/Most Places)	26-50	Scattered (SCT/A Few Places)
51-75	Fairly Widespread (FWS/Many Places)	1-25	Isolated (ISOL)



Fog



Heavy Snow



Cold Wave



Heavy Rain



Dust Storm



Cold Day



Very Heavy Rain



Heat Wave



Ground Frost



Extremely Heavy Rain



Warm Night



Thunder & Lightning



Hot Day



Hailstorm



Hot & Humid



Dust Raising Winds



Strong Surface Winds

### COLOUR CODED WARNING

No Warning (No Action)

Watch (Be Aware)

Alert (Be Prepared To Take Action)

Warning (Take Action)

### Probabilistic Forecast

Terms	Probability of Occurrence (%)
Unlikely	< 25
Likely	25 - 50
Very Likely	50 - 75
Most Likely	> 75

\* Red colour warning does not mean "Red Alert", Red colour warning means "Take Action".

Forecast and Warning for any day is valid from 0830 hours IST of day till 0830 hours IST of next day.

For more details, kindly visit <https://mausam.imd.gov.in> or contact: 011-2434-4599

(Service to the Nation since 1875)



### DEFINITION/CRITERIA

#### Rain/ Snow \*

Heavy: 64.5 to 115.5 mm/cm \*  
Very Heavy: 115.6 to 204.4 mm/cm \*  
Extremely Heavy: > 204.4 mm/cm \*

#### Heat Wave

When maximum temperature of a station reaches  $\geq 40^{\circ}\text{C}$  for plains and  $\geq 30^{\circ}\text{C}$  for hilly regions  
(a) Based on Departure from normal

Heat Wave: Maximum Temperature Departure from normal  $4.5^{\circ}\text{C}$  to  $6.4^{\circ}\text{C}$ .

Severe Heat Wave: Maximum Temperature Departure from normal  $\geq 6.5^{\circ}\text{C}$

(b). Based on Actual maximum temperature

Heat Wave: When actual maximum temperature  $\geq 45^{\circ}\text{C}$ .

Severe Heat Wave: When actual maximum temperature  $\geq 47^{\circ}\text{C}$ .

(c). Criteria for heat wave for coastal stations

When maximum temperature departure is  $> 4.5^{\circ}\text{C}$  from normal. Heat Wave may be described provided maximum temperature  $\geq 37^{\circ}\text{C}$ .

#### Warm Night

When maximum temperature remains  $40^{\circ}\text{C}$

Warm Night: When minimum temperature departure  $4.5^{\circ}\text{C}$  to  $6.4^{\circ}\text{C}$ .

Severe Warm Night: When minimum temperature departure  $> 6.4^{\circ}\text{C}$ .

#### Cold Wave

When minimum temperature of a station  $\leq 10^{\circ}\text{C}$  for plains and  $\leq 0^{\circ}\text{C}$  for hilly regions.

(a). Based on departure

Cold Wave: Minimum Temperature Departure from normal  $-4.5^{\circ}\text{C}$  to  $-6.4^{\circ}\text{C}$ .

Severe Cold Wave: Minimum Temperature Departure from normal  $\leq -6.5^{\circ}\text{C}$

(b) Based on actual Minimum Temperature (for Plains only)

Cold Wave: When Minimum Temperature is  $\leq 4.0^{\circ}\text{C}$

Severe Cold Wave: When Minimum Temperature is  $\leq 2.0^{\circ}\text{C}$

(c) For Coastal Stations

When Minimum Temperature departure is  $\leq -4.5^{\circ}\text{C}$  & actual Minimum Temperature is  $\leq 15^{\circ}\text{C}$

#### Cold Day

When minimum temperature of a station  $\leq 10^{\circ}\text{C}$  for plains and  $\leq 0^{\circ}\text{C}$  for hilly regions

Based on departure

Cold Day: Maximum Temperature Departure from normal  $-4.5^{\circ}\text{C}$  to  $-6.4^{\circ}\text{C}$ .

Severe Cold Day: Maximum Temperature Departure from normal  $\leq -6.5^{\circ}\text{C}$

#### Fog

Phenomenon of small droplets suspended in air and the horizontal visibility  $< 1\text{km}$

Moderate Fog: When the visibility between 500-200 metres

Dense Fog: when the visibility between 50- 200 metres

Very Dense Fog: when the visibility  $< 50$  metres

#### Thunderstorm

Sudden electrical discharges manifested by a flash of light (Lightning) and a sharp rumbling sound (thunder)

#### Dust/Sand Storm

An ensemble of particles of dust or sand energetically lifted to great heights by a strong and turbulent wind.

#### Frost

Ice deposits on ground

Air temperature  $\leq 4^{\circ}\text{C}$  ( over Plains)

#### Squall

A strong wind that rises suddenly, lasts for atleast 1 minute.

Moderate: Wind speed 52-61 kmph

Severe: Wind speed 62-67 kmph

Very Severe: Wind speed  $> 67$  kmph

#### Sea State

Effect of various waves in the sea over specific area

Rough to very rough: Wind speed 41-62 kmph (22-33 knots) & Wave height 2.5-6 metre

High to very high: Wind speed 63-117 kmph ( 34-63 knots) & Wave height 6-14 metre

Phenomenal: Wind speed  $> 117$  kmph ( $> 63$  knots) & Wave height  $> 14$  metre

#### Cyclone

Cyclonic Storm: Wind speed 62-87 kmph (34-47 knots)

Severe Cyclonic Storm: Wind speed 88-117 kmph (48-63 knots)

Very Severe Cyclonic Storm: Wind speed 118-165 kmph (64 - 89 knots)

Extremely Severe Cyclonic Storm: Wind speed 166-220 kmph (90 -119 knots)

Super Cyclone Storm: Wind speed  $> 220$  kmph ( $> 119$  knots)

\* Red colour warning does not mean "Red Alert", Red colour warning means "Take Action".

Forecast and Warning for any day is valid from 0830 hours IST of day till 0830 hours IST of next day.

For more details, kindly visit <https://mausam.imd.gov.in> or contact: 011-2434-4599

(Service to the Nation since 1875)

**Hot and Humid:** When maximum temperatures remain  $3^{\circ}\text{C}$  above normal along with the above normal relative humidity.